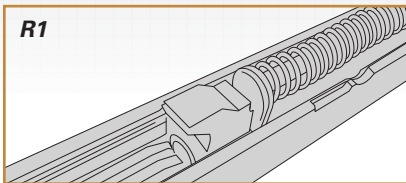
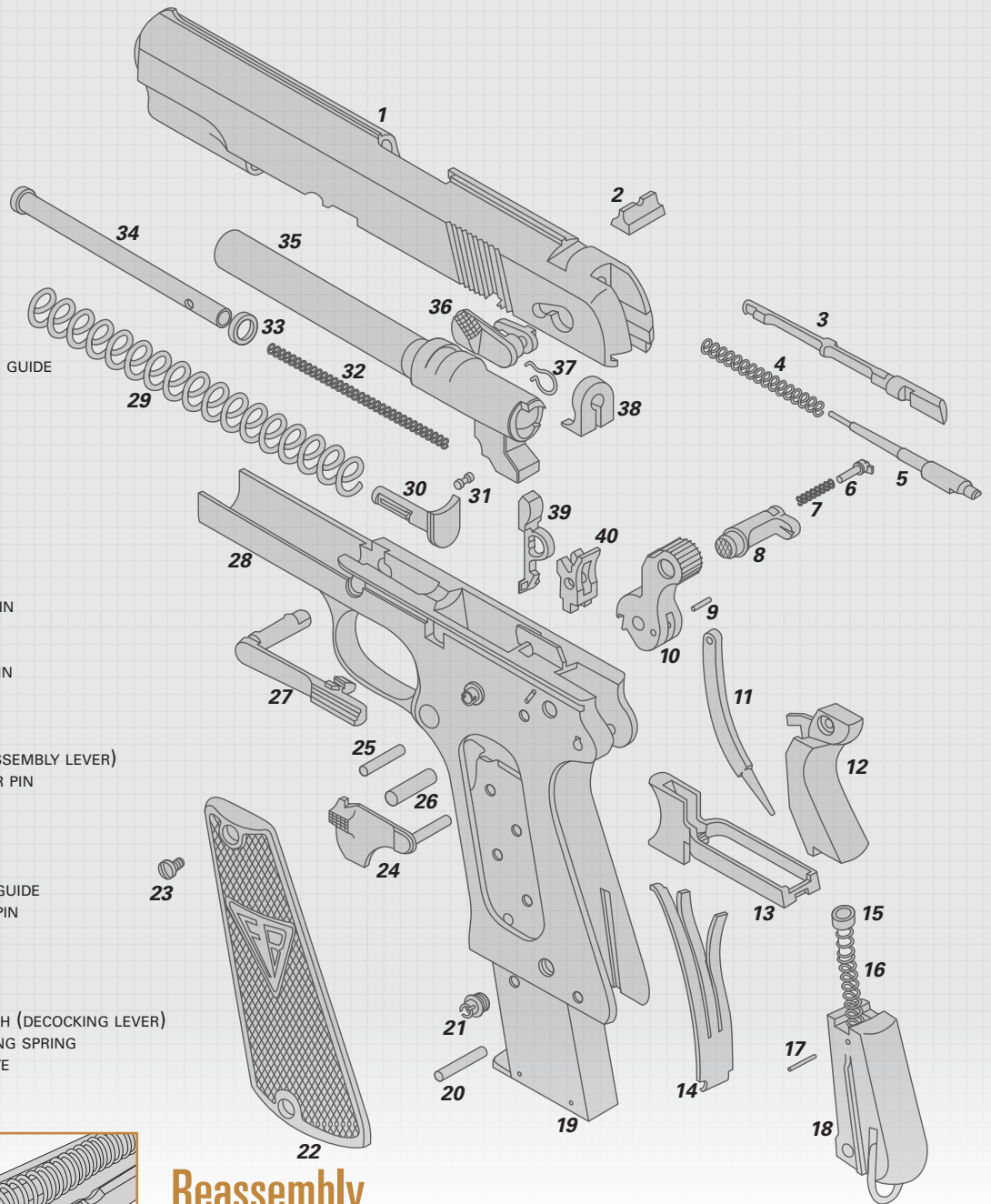
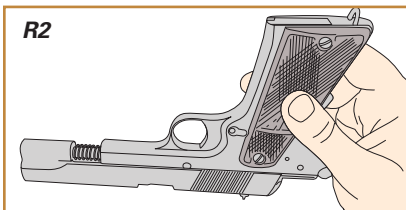


Parts Legend

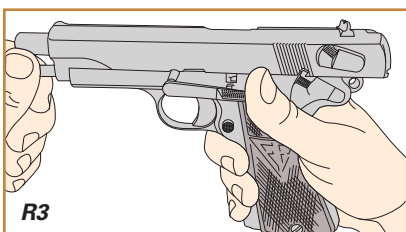
1. SLIDE
2. REAR SIGHT
3. EXTRACTOR
4. FIRING PIN SPRING
5. FIRING PIN
6. MAGAZINE CATCH SPRING GUIDE
7. MAGAZINE CATCH SPRING
8. MAGAZINE CATCH
9. HAMMER STRUT PIN
10. HAMMER
11. HAMMER STRUT
12. GRIP SAFETY
13. TRIGGER
14. SEAR SPRING
15. MAIN SPRING CAP
16. MAIN SPRING
17. MAIN SPRING RETAINER PIN
18. MAIN SPRING HOUSING
19. MAGAZINE
20. MAIN SPRING HOUSING PIN
21. GRIP SCREW BUSHING
22. LEFT-HAND GRIP
23. GRIP SCREW
24. TAKE-DOWN LATCH (DISASSEMBLY LEVER)
25. SEAR AND DISCONNECTOR PIN
26. HAMMER PIN
27. SLIDE STOP
28. FRAME (RECEIVER)
29. RECOIL SPRING
30. SLOTTED RECOIL SPRING GUIDE
31. SPRING GUIDE RETAINER PIN
32. AUXILIARY RECOIL SPRING
33. RECOIL SPRING STOP
34. RECOIL SPRING GUIDE
35. BARREL
36. HAMMER LOWERING CATCH (DECOCKING LEVER)
37. HAMMER CATCH OPERATING SPRING
38. FIRING PIN RETAINER PLATE
39. DISCONNECTOR
40. SEAR



R1



R2



R3

Reassembly

1. Reassemble slide components. Insert the barrel into the slide (this may require a bit of wiggling). Ensure the barrel is fully in place, with the locking lugs engaged in the top of the slide. Insert the recoil spring assembly into its recess in the front of the slide, with the semicircular cutout facing upward. Then rotate the spring guide 180 degrees so the semicircular cutout fits against the underside of the barrel.
2. Replace slide on frame. Replace the slide assembly onto the frame rails, the reverse of how it disassembled. This is most easily done with the pistol held upside down, as this will help keep the barrel fully engaged in its locking lugs. If the barrel drops out of those lugs, it will prevent the slide from moving into place properly.
3. Replace slide stop lever. Repeating your disassembly step to hold the slide open, set the slide stop lever loosely in its hole in the frame, facing directly upward. Pull the exposed end of the recoil spring guide forward and gently press the slide stop lever into place. You may need to guide it into place, but force is not required if the guide rod is pulled forward. Alternatively, the slide stop can be pushed directly into place without holding the guide rod, but this will require some force to push into place and one should be careful not to scratch the frame in the process.