

# Exploded View

BY SCOTT E. MAYER  
Associate Technical Editor

## BENELLI MONTEFELTRO SUPER 90

IN 1987, Benelli introduced its first Super 90, the M1. It quickly became a favorite among European practical shotgun competitors, but hunters who wanted a more traditional looking shotgun had to wait for the Montefeltro version to come out the following year.

Appealing features of the Montefeltro include a series of stock shims for adjusting the drop at heel by almost 1/2". Adding the shims is simply a

matter of unscrewing one of the buttplate screws so the buttplate can be turned, exposing the stock through bolt. Loosen the 13 mm stock bolt retaining nut, then pull the stock off the recoil spring tube. Install the desired shim, and reassemble the buttstock.

The recoil-operated action has a rotary locking system that fires 3" and shorter shells interchangeably. Lockup is by two lugs on the bolt rotating

into a steel barrel extension. Since the bolt locks directly to the barrel, the Montefeltro can use a light-weight, aluminum receiver. A slender fore-end is achieved through a lack of gas system parts around the magazine tube. No gas system means no rubber O-rings, which reduces the chance of malfunctions attributable to fouling and helps keep overall weight of the gun low.

*Introduced in 1987, Benelli's Montefeltro is a recoil-operated autoloader with an aluminum receiver that uses a rotary bolt locking system.*

### DISASSEMBLY

Begin by ensuring that the shotgun is unloaded and all ammunition is removed from the work area. Unscrew the fore-end cap (61), slide the fore-end (62) off the magazine tube (59) and lock the bolt (24) open. Next, pull the barrel (39) forward and out of the receiver (44) (Fig. 1). Firmly grasp the bolt handle (28), depress the carrier latch button (52) and ease the bolt forward.

Using considerable force, pull the bolt handle straight out from the bolt (Fig. 2). Lift

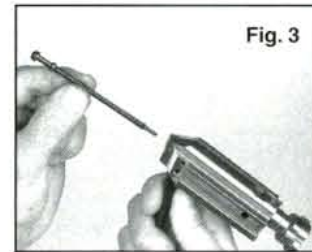


Fig. 3



Fig. 4

the bolt from the front of the receiver. While controlling the firing pin (23), remove the firing pin retaining pin (26), then lift the firing pin and firing pin spring from the rear of the bolt (Fig. 3). To complete disassembly of the bolt assembly, lift the locking head pin (29) from the bolt body and remove the locking head (30) and inertia spring (34) from the front of the bolt body (Fig. 4).

Using the firing pin as a punch, press the trigger guard pin (14) out from right to left. Depress and hold down the carrier latch button and pull the trigger group forward and

free from the receiver (Fig. 5).

That is the extent of disassembly necessary for routine maintenance and cleaning. Reassembly is in the reverse order. It is helpful when reinserting the bolt assembly to keep the receiver in a horizontal position to ensure that the link (25) slides over the trigger guard assembly and onto the recoil spring plunger (50) inside the receiver.

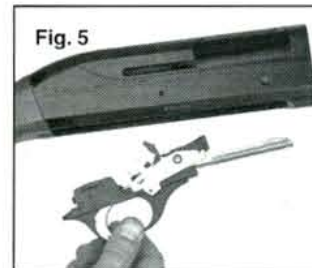
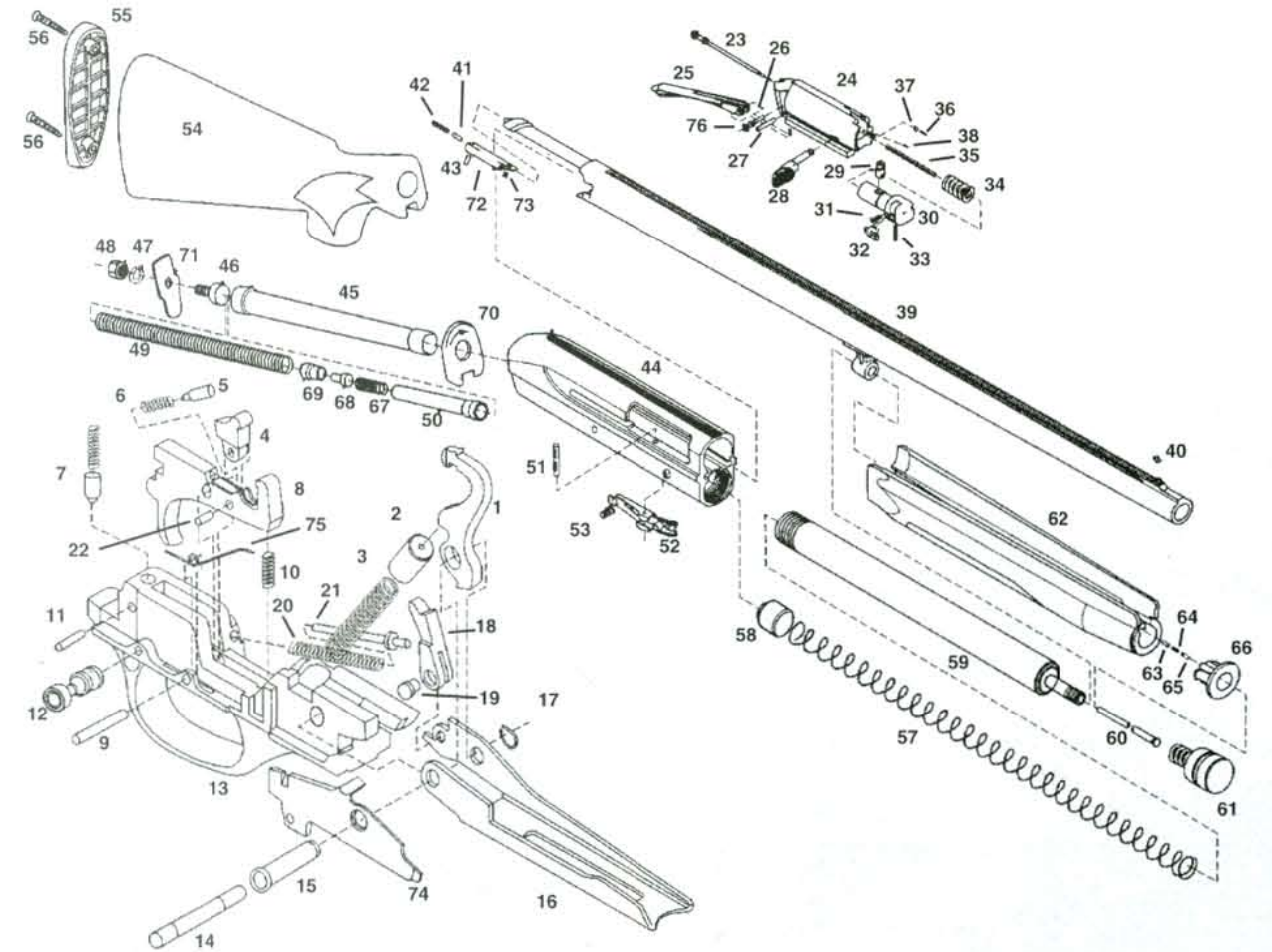


Fig. 5

## BENELLI MONTEFELTRO SUPER 90



### PARTS LEGEND

- |                                   |                                      |                                 |
|-----------------------------------|--------------------------------------|---------------------------------|
| 1. Hammer                         | 25. Link                             | 49. Recoil Spring               |
| 2. Hammer Spring Cap              | 26. Firing Pin Retaining Pin         | 50. Recoil Spring Plunger       |
| 3. Hammer Spring                  | 27. Link Pin                         | 51. Carrier Latch Pin           |
| 4. Disconnecter                   | 28. Bolt Handle                      | 52. Carrier Latch               |
| 5. Disconnecter Plunger           | 29. Locking Head Pin                 | 53. Carrier Latch Spring        |
| 6. Disconnecter Plunger Spring    | 30. Locking Head                     | 54. Stock                       |
| 7. Hand Safety Plunger and Spring | 31. Extractor Spring                 | 55. Butt Plate                  |
| 8. Trigger                        | 32. Extractor                        | 56. Butt Plate Screw (2)        |
| 9. Trigger Pin                    | 33. Extractor Pin                    | 57. Magazine Spring             |
| 10. Trigger Spring                | 34. Inertia Spring                   | 58. Magazine Follower           |
| 11. Safety Spring Retaining Pin   | 35. Firing Pin Spring                | 59. Magazine Tube               |
| 12. Hand Safety                   | 36. Bolt Handle Retaining Spring     | 60. Magazine Plug               |
| 13. Trigger Guard                 | 37. Bolt Handle Pin                  | 61. Fore-end Cap                |
| 14. Trigger Guard Pin             | 38. Bolt Handle Spring Retaining Pin | 62. Fore-end                    |
| 15. Trigger Pin Bushing           | 39. Barrel                           | 63. Cap Retaining Pin Screw     |
| 16. Carrier                       | 40. Front Sight                      | 64. Cap Retaining Pin Spring    |
| 17. Trigger Guard Pin Spring      | 41. Ejector Pin                      | 65. Cap Retaining Pin           |
| 18. Breech Bolt Latch             | 42. Ejector Pin Spring               | 66. Cap Retaining Pin Bushing   |
| 19. Breech Bolt Latch Pin         | 43. Ejector Spring Retaining Pin     | 67. Damper Spring               |
| 20. Carrier Spring                | 44. Receiver                         | 68. Damper Pin                  |
| 21. Carrier Spring Plunger        | 45. Recoil Spring Tube               | 69. Guide Bushing               |
| 22. Disconnecter Pin              | 46. Stock Retaining Nut Screw        | 70. Interchangeable Drop Shim   |
| 23. Firing Pin                    | 47. Elastic Washer                   | 71. Locking Plate               |
| 24. Bolt                          | 48. Stock Retaining Nut              | 72. Ejector Frame               |
|                                   |                                      | 73. Ejector Retaining Rivet     |
|                                   |                                      | 74. Cartridge Drop Lever        |
|                                   |                                      | 75. Cartridge Drop Lever Spring |
|                                   |                                      | 76. O-Ring                      |